

# RECYCLING & WASTE REDUCTION STRATEGIES FOR SPECIAL EVENTS

This program is a  
partnership of:



**BUSCH**  
SYSTEMS

**WEDNESDAY JANUARY 25TH**  
**1:00 - 2:15 P.M. ET.**



# Agenda

## 0:00 -25:00 Case study presentations:

- *ZeroWastePA, Pennsylvania Resource Council*
- *The University of Texas at Austin*

## 30:00 - 70:00 Breakout group discussions

- *Main Room - \*\*General - any related topic + Tech support*
- *Room 1 - Q&A w/ speakers*
- *Room 2 - Planning & logistics*
- *Room 3 - Bins & Signage selection*
- *Room 4 - Outreach & education*

## 70:00 - 75:00 Close out program

# Participate!

---

- Share thoughts through chat
- Mute yourself when not talking
- Turn camera on during discussion
- Review discussion notes
- Share Resources
- Share Photos

# Presenters



**Morgan Laner**  
Zero Waste Program Coordinator  
The University of Texas at Austin



**Zach Delaney**  
Zero Waste PA Program Manager  
Pennsylvania Resource Council



# Zero Waste Assistance & Special Events

---

PENNSYLVANIA RESOURCES COUNCIL

# In this presentation

---

PRC's Service Suite



```
graph TD; A[PRC's Service Suite] --> B[Technical Assistance]; B --> C[Zero Waste Special Events]; C --> D[Event Case Study]; D --> E[Principles of Zero Waste]
```

Technical Assistance

Zero Waste Special Events

Event Case Study

Principles of Zero Waste

# PRC Service Suite

---

Hazardous  
Household  
Waste

E-Waste

Hard to  
Recycle

Conservation  
Workshops

Youth  
Education

Policy &  
Advocacy

Zero Waste  
Events

Waste Auditing  
& Technical  
Assistance

# Zero Waste Technical Assistance

---



- Primarily takes the form of audits and analysis
- Includes:
  - Site evaluation
  - Waste collection and on-site sorting
  - Recommendations report and analysis
  - Implementation support
- As small-scale as a local restaurant or tea shop, to as large-scale as airports and universities

[Audit Site Visit Questionnaire SAMPLE PDF](#)







# ZWPA: Zero Waste Events

- Work with businesses, institutions, municipalities, and special events to minimize waste production and maximize diversion
- Aim for 90%+ rate of diversion
- Accomplished through:
  - Event Staffing
  - Education
  - Purchasing and Procurement
  - Partnerships
  - Data Collection & Evaluation
- Correlate waste diversion with greenhouse gas reduction, energy savings, and economic impact through the EPA's WARM Model

# ZWPA: Zero Waste Kit Rental

---

- Offered at events of 250 or fewer that can be indoor or outdoor
- We provide compost, recycling, and landfill clearstream containers
- Compostable service-ware, material disposal, oil collection, and signage are offered as well

Service/Item	Cost	Unit
<b>Zero Waste Station</b> <i>You may rent up to 4 stations.</i>	\$30	Per Station
<b>Compost Disposal</b> <i>Per full 45-gallon bag</i>	\$20	Per Bag
<b>PRC Delivery/Pick Up</b> <i>Within City of Pittsburgh only. Out of City rentals should plan to pick up/drop off equipment at our office.</i>	\$50	One-Way
<b>Pre- Event Technical Assistance</b>	\$45	Hourly



# Case Study: The Marathon

---

- 26,000 runners, complex assortment of waste, exceptionally large area covered by 35+ stations, numerous on-site concessionaires and vendors
- Between 2013 and 2016, reduced landfilled waste by 6.7 tons
- Increased total diversion by 9.2 tons through more effective collection of organics, textiles, recyclables, and hard to recycle items
- Consistently achieving over 90% reduction, while decreasing overall waste quantity



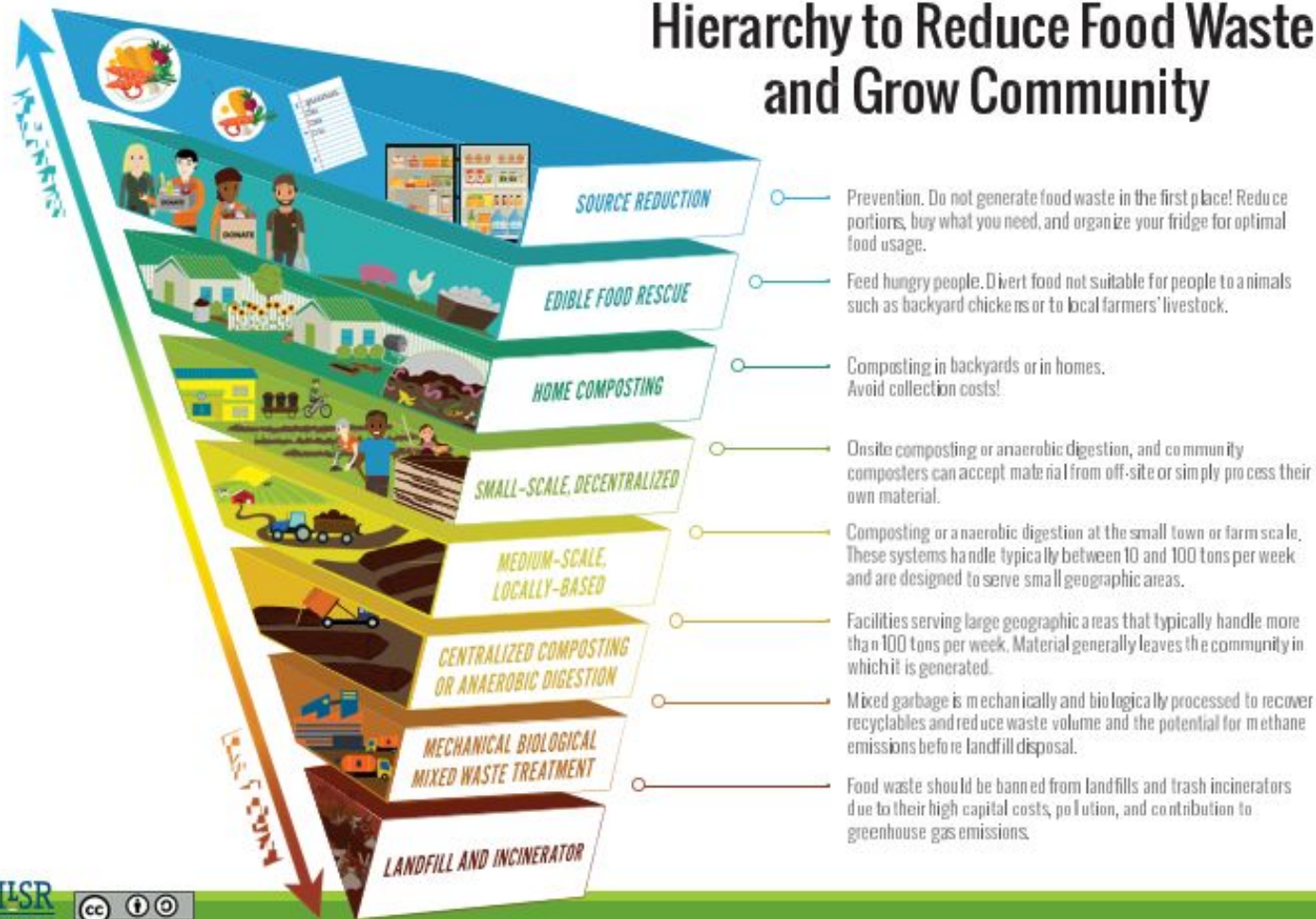


## Case Study: The Three Rivers Arts Festival

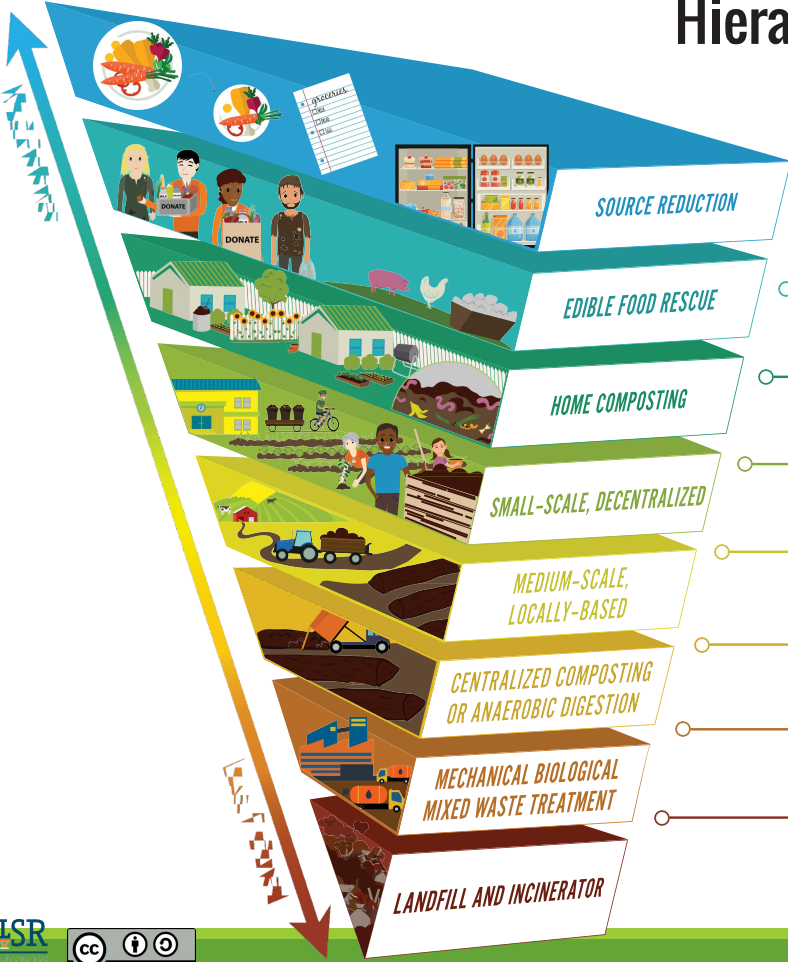
---

- 10-day festival, 600+ hours of combined staff labor, 150,000-500,000 attendees, 35+ waste stations over entire parks or square blocks of Downtown Pittsburgh
- Music, arts, crafts, food, and more create 30+ tons of fry-oil, plastic, organic, and metal waste
- ~75% diversion pre-pandemic, changes in location, operations, and other external factors have reduced diversion post-pandemic
- Planning for these events begins months in advance and includes a detailed scope of work proposal and frequent contact with public and private stakeholders

# Hierarchy to Reduce Food Waste and Grow Community



# Hierarchy to Reduce Food Waste and Grow Community



**SOURCE REDUCTION**

Prevention. Do not generate food waste in the first place! Reduce portions, buy what you need, and organize your fridge for optimal food usage.

**EDIBLE FOOD RESCUE**

Feed hungry people. Divert food not suitable for people to animals such as backyard chickens or to local farmers' livestock.

**HOME COMPOSTING**

Composting in backyards or in homes. Avoid collection costs!

**SMALL-SCALE, DECENTRALIZED**

Onsite composting or anaerobic digestion, and community composters can accept material from off-site or simply process their own material.

**MEDIUM-SCALE, LOCALLY-BASED**

Composting or anaerobic digestion at the small town or farm scale. These systems handle typically between 10 and 100 tons per week and are designed to serve small geographic areas.

**CENTRALIZED COMPOSTING OR ANAEROBIC DIGESTION**

Facilities serving large geographic areas that typically handle more than 100 tons per week. Material generally leaves the community in which it is generated.

**MECHANICAL BIOLOGICAL MIXED WASTE TREATMENT**

Mixed garbage is mechanically and biologically processed to recover recyclables and reduce waste volume and the potential for methane emissions before landfill disposal.

**LANDFILL AND INCINERATOR**

Food waste should be banned from landfills and trash incinerators due to their high capital costs, pollution, and contribution to greenhouse gas emissions.

---

Contact  
Information

Zachary Delaney

---

[ZeroWastePA](#) Program Manager

---

[zacharyd@prc.org](mailto:zacharyd@prc.org)

---

(412) 488-7490 Ext. 9

---

**JANUARY 2023**



# **COMPOSTING FOR ON-CAMPUS EVENTS**

---

**MORGAN LANER**

Zero Waste Program Coordinator, The University of Texas at Austin



# Big Picture Structure

- Flagship campus for University of Texas system
- 18 million square feet of building floor area
- 52,000+ students
- 14,000+ employees



# How do zero waste events fit in?

- Zero waste goal
- Operations-focused unit within Facilities Services
- Centrally funded for programming in education/general use spaces
- Staff & intern-supported project team



# Challenge: Access to Compost

- Build route for E&G spaces
- Capacity based on daily operations
- Goal: have additional toters in specific corrals that can be moved for temporary additional capacity



# Standard Event Bin Options:

Landfill Trash & Recycle

## Current Operations

- Rented through another Facilities Services branch
- 32 gallon Brutes (grey & blue)

## Next Step

- Standard bumper stickers on both sides of bins, visible from multiple angles

 **RECYCLE**

Metal & Glass • Clean Office Paper & Cardboard  
Plastic Bottles and Containers

**LANDFILL TRASH**

Wrappers & Packets • Paper Cups & Cartons  
Plastic Bags & Styrofoam



# Challenge: Renting Out Compost Bins for Events

- Opt-in services
- Integration with primary Event Planning Request Form



**The University of Texas at Austin  
Facilities Services**

**Event Planning Request Form**

Use this form to request services for your event. Please provide as much information as you can. We are happy to assist you in determining quantity or size of items requested, please call the Facilities Service Center at 512-471-2520 or email at [tuports@utop.edu](mailto:tuports@utop.edu). We may reach out to you for clarification or more information.

You will receive a detailed e-mail of your request upon submission of this form. A separate e-mail containing the assigned work order number will be sent to you once your event is scheduled, please keep both for your records.

**If you are a student organization, you must submit through the Office of the Dean of Students**


\* Indicates a required field. You can remove from page to page without answering all required fields, but they must be answered before submission.

**Compost Bins and Liners**


Compost disposal will be managed by the event planner. Compost totes in your building's waste disposal corridor are fast loaded and only those with correct training are provided with a key. Our staff will determine if additional compost totes are needed at the waste disposal corral and provide next steps as needed.

Zero Waste Event Best Practices call for waste stations to be a bin for each waste stream you plan to collect (i.e. Recycle, Compost, and/or Landfill/Trash). We recommend one station per 25 people if you are utilizing compostable serviceware at your event. If you are only collecting food scraps for compost or other liquid and explore your life lines throughout your event, adjust accordingly. Please contact us if you require additional information determining the number of bins recommended for your event.


**Slim Jim Compost Bins, 23 Gallons**



**Brute Compost Bins, 32 Gallons**



**X-Frame Compost Bins, 40 Gallons**



WO Number: [REDACTED]  
 Req Number: [REDACTED]  
 Description: ECG OCS HOLIDAY PARTY 12/9-16/22

---

Requestor: [REDACTED] 5175000 OFFICE OF ENVIR01  
 Alt Requestor: [REDACTED]  
 Non-available: [REDACTED] CP Number: [REDACTED]

Site: UTM UT MAIN CAMPUS Building: 9820 EAST CAMPUS GARAGE  
 Floor: Room:  
 Address: 1200 E MARTIN LUTHER KING BLVD AUSTIN 78722  
 Type: EVENT Status: OPEN Priority: 5  
 Crew: 049 Craft: Est Hours:  
 Method:  
 Assigned To: Start Date: 09-DEC-2022 Due Date: 16-DEC-2022  
 Asset Class: Sched Date: 09-DEC-2022  
 Equipment:

---

**Task List**

**\*\*GENERAL INFORMATION\*\*  
 (ANY INSTRUCTIONS SPECIFIC TO A SHOP WILL BE LISTED UNDER THE INSTRUCTIONS FOR THAT SHOP.)**

ON THURSDAY, DECEMBER 15, 2022, FROM 12:00 NOON TO 2:00 PM THE OCS HOLIDAY PARTY WILL BE HELD AT ECG.  
 RAIN PLAN: NO  
 APPROXIMATE # OF GUESTS: 50  
 FOOD AND DRINK BE SERVED: YES  
 WHO WILL BE CLEANING UP AFTER, CLIENT  
 WILL LINENS BE REQUIRED FROM CUSTODIAL SERVICES: NO  
 DIAGRAM PROVIDED: NO  
 EXISTING FURNITURE/ITEMS WILL NEED TO BE MOVED BY EMS: NO  
 ESTIMATE REQUIRED: NO  
 OVERTIME AUTHORIZED: NO

---

EVENT CONTACT IS [REDACTED]

146/147 RESOURCE RECOVERY

ACTION: SELF PICK UP  
 DATE: FRIDAY, DECEMBER 9, 2022  
 TIME: BY 3:00 PM  
 LOCATION: FCB  
 NOTES: CLIENT HAS RECEIVED COMPOST TRAINING. COMPOST WILL BE BROUGHT TO FACILITIES COMPLEX FOR DISPOSAL.

---

(100) 6" PLATES  
 (100) 9" PLATES  
 (250) COCKTAIL NAPKINS  
 (100) FORKS  
 (100) SPOONS  
 (1) BRUTE COMPOST BINS, 32 GALLONS  
 (5) COMPOST BIN LINERS, 45 GALLONS  
 (1) NIFTY NABBER

# Event Compost Bin Options

## Considerations during research:

- Visibility
- Size
- Easy to remove (for storage & replacing liners)
- Sturdy



**Busch Systems**  
Waste Watcher



**Clearstream**  
X-Frame + Billboard Sign Kit



**Brute**  
32 Gallon Bin

# Challenge: Reducing Contamination

- Controlled access to toters
- Required compost training
- Consultations
- Sell BPI-certified compostable serviceware



What to look for on packaging

YES		NO
	 <p>Must have #7 AND PLA</p>	

# Challenge: Cost & Staffing

- Hired support
- Bin monitor resources
- Paid services & products vs. free options





# Challenge: Outreach & Education

- Promotion to event planners
- Persuasive arguments
- Tools for attendees
  - Promotion toolkit
  - Customizable waste bin signage



Gen Z, Millennials Stand Out for Climate Change Activism, Social Media Engagement With Issue





## Morgan Laner

[morgan.laner@austin.utexas.edu](mailto:morgan.laner@austin.utexas.edu)

# Additional Resources

- [Zero Waste Program](#)
- [Zero Waste Events](#)
- [ZWEco Supply Store](#)
- [Customizable Waste Bin Signage Template](#)
- [Food Vendor Conversation Guide](#)
- [Sample Monthly Training Recording](#)

# Live Poll Question:

**What are your biggest challenges with special events? (click multiple)**

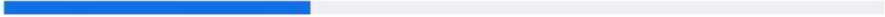
- Operational logistics / coordinating service
- Coordinating vendor participation
- Coordinating other stakeholders
- Training staff
- General planning logistics
- Funding
- Attendee outreach & engagement
- Other (share details in chat)

# Live Poll Answers:

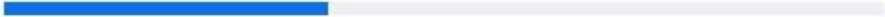
1. What are your biggest challenge(s) with special events? (select multiple if applicable) (Multiple Choice) \*

121/121 (100%) answered

Operational logistics / coordinating service (42/121) 35%



Coordinating vendor participation (45/121) 37%



Coordinating other stakeholders (29/121) 24%



Training staff (32/121) 26%



General planning logistics (24/121) 20%



Funding (24/121) 20%



Attendee outreach & engagement (59/121) 49%



# Transition to Breakout Groups

---

# Room #1: Q&A + Discussion w/ Speakers

---

# Room #2: Planning & Logistics

*Moderator: Nikhil Schneider*

- *Training & procedures*
- *Coordinating service providers*
- *Coordinating w/ vendors on food packaging*
- *?*



# Room #3: Bins & Signage

*Moderator: Lin King & Alec Cooley*

- Appropriate bins specifications
- What to display on signage
- Where to place bins
- ?

# Room #4: Outreach & Engagement

*Moderator: Laura Gonzalez-Ospina*

- Bin station monitors
- Displays, labeling
- Other creative engagement —
- Event Communication ( before, during, and after)
- ?

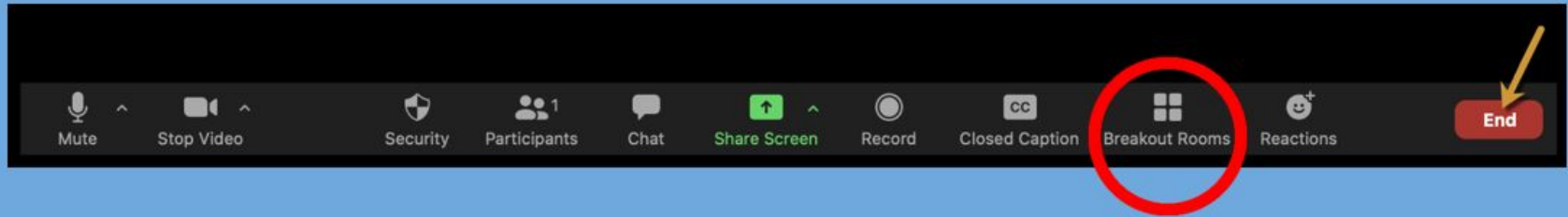
# Main Room (stay here)

*Moderator: Julie Muir*

- Tech support
- General discussion - other topics related to event waste reduction

# Select Room Now

---



- If you have trouble, leave note in the chat / stay in Main room and someone will help you.
- Turn on Cameras in breakout room.

# Notes: Room 1 - Q&A w/ Speakers

- Questions for Zach from chat
  - Do you have a template that you would be willing to share in terms of a purchasing policy?
    - \*in progress because language & policies seem to be weirdly hard to come by even though we all want it\*
  - How do you provide the Zero waste kit rental? Specifically how are you providing support with oil collection?
    - We have a storage location with our compost dumpster where we keep our equipment, we will determine either a pick-up or drop-off model for the equipment (bags, bins, etc)
    - They will then drop off the waste and equipment there
  - How do you acquire so many volunteers for large events?
    - We pay people! We offer \$15/hour for “contractors” to attend the waste stations, the cost of labor is incorporated into the proposal for the event.
  - Are any of you incorporating reusables into zero waste events?
    - Yes! We prioritize reducing waste & incorporating reusables as our highest priorities, although for events like the Marathon or the Arts Festival it is challenging or impossible
  - How many volunteers does it take to watch over each disposal area during the marathon event?
    - 1 per waste station is typically enough, although depending on size 1 person may attend several stations or we may have 2 per station
  - What do you do about litter during the marathon? Do you pick it up?
    - Yes, we try to manage all waste present to the best of our ability across all of our ZW stations & team
  - Do you see a high demand for larger music festivals and sporting events looking at zero waste strategies?
    - Yes, absolutely, between stadiums and music vendors, to events like the arts festival and marathon that don't have permanent locations, ZW is attracting a lot of interest
  - How many categories do you sort when doing a waste characterization?
    - A “full” characterization I believe includes around 20 total categories by breaking down types of organics (pre-consumer, post-consumer, recoverable), types of recycling (hard to recycle/recyclable/non-recyclable plastic, paper, cardboard, metals), and types of final disposal / landfill

# Notes: Room 1 - Q&A w/ Speakers

- Questions for Morgan from chat:
  - Have you considered purchasing reusable utensils instead of compostable utensils for events/Are any of you incorporating reusables into zero waste events?
    - Definitely considered! Event planners had interest pre-COVID but not so much now. Greatest challenge for us is how do we manage sanitization/cleaning between events, as well as the storage space as we're a small department
  - How many total staff do you have (students/full time) at UTA?
    - We have over 52,000 students and 14,000 at UT Austin! On the Zero Waste team, we have 2 full time staff coordinators and then currently have 3 part time students who work on the Zero Waste Events team about 10 hours/week each
  - What utensils are UT using that is acceptable to your composter?
    - No specific brands, just look for BPI certification/PLA which is what site accepts
    - Same composter as City of Austin so keeping in alignment with their messaging
    - What about CMA products? UT currently not looking at those since our facility accepts BPI
  - Morgan, you mentioned that your compost hauler charges you for contamination. Is there any sorting on your end before it gets taken off-site?
    - Event planners are responsible for ensuring that there is no contamination in the bag before it goes to the toter. It's challenging to ensure compliance with this so we just emphasize it as much as possible during the training and confirmation email and then we can sometimes do spot audits if we are walking by the event
  - Is compost campus-wide?
    - We are rolling out paper towel composting in the education & general use buildings, but due to high contamination we don't have much front of house composting. Auxiliaries manage their own waste contracts and some have compost.

# Notes: Room 1 - Q&A w/ Speakers

---

- Reusables idea: place trays on the top of x-frames for silverware collection
- Discussion about massive-scale Canada Summer Games event – what are the starting points?
  - Focus groups, build partnership with educational or service group to be bin monitors

# Notes: Room 2 - Planning & Logistics

---

- In limbo - wanting to be zero waste. How to uplift and encourage but understand that not everyone has the resources to create a Zero Waste event.
- Catering great at being Zero Waste - can't keep people from using their own caterer in some events. Ex. might be doing an event that is cultural and there are certain caterers brought in for that event and they do their own waste collection - they don't have the resources for zero waste.
- Have people assigned to help but it can still become too much and still end up with a lot of waste.
- Events checklist idea for events (City of Palo Alto example) - each department has their own requirements. Add in zero waste requirements on this checklist. Ex. single use water bottles are not permitted for the event. If it is a city run event (example), everything must be compostable. Provide consultation ahead of time so those participating know what is expected/required.
- Event policy - That has language for signage for events
- "Party Packs" - "borrowing" of cutlery, cups, bowls and plates that are reusable. Only requirement is that they are returned washed.
- Recycling "requirements" for events. Shared from Dakota County:  
<https://www.co.dakota.mn.us/Environment/ReportsStudies/solid-waste-master-plan/Documents/EventRequirements.pdf>
- **(CONT'D ON NEXT SLIDE)**



# Notes: Room 2 - Planning & Logistics

---

- Another link provided: <https://www.sustain.ucla.edu/green-events/>
- Helping every step of the way (ie. hand holding) vs. giving information and asking them to teach themselves/figure it out. Suggesting to make it as easy as possible for the event planners because the main focus is the event running - Zero waste/waste collection is the afterthought so if they are required to do that on their own, they may not do it.
- <https://upstreamolutions.org/reuse-wins-at-events>
- Reusables at events. rCup
- <https://www.hiccupearth.com/> - reusable & returnable cup service. Foreverwear is another one suggested.
- Challenge in finding a reusable cup vendor for hot beverages.
- Zero Waste Schools - <https://zerowastemarin.org/schools/>
- Bulk Water for events. WaterMonster suggested as an option: [WaterMonster – The Complete Hydration Solution](#). Another suggestion - US Pure Water: [U.S. Pure Water - Quality Drinking Water | Novato CA \(uspurewater.com\)](#). Another suggested company - Meet Pat: [The World's Smartest Water Stations | Meet PAT](#). Another suggestion: [FloWater | The Modern Water Dispenser: More Than Just a Water Cooler \(drinkflowater.com\)](#)
- Appealing messaging - on social media and with promotion of event.
- Encourage attendees to bring their own cup or for vendors to sell reusable cups.
- **(CONT'D ON NEXT SLIDE)**

# Notes: Room 2 - Planning & Logistics

---

- Zero Waste event checklist - <https://sfenvironment.org/recycling-composting-resources-event-producers>
- Reusable dishware checkout program. Ordering system.
- Recycling at Events: Dakota County:  
<https://www.co.dakota.mn.us/Environment/EducationResources/Events/Pages/default.aspx>
- [https://www.edmonton.ca/attractions\\_events/civic-events-office](https://www.edmonton.ca/attractions_events/civic-events-office)

# Notes: Room 3 - Bins & Signage

---

- Multiple people referred to importance of having special signage displayed above the bins.
- Challenge w/ wire frame bins: wind can knock over. Solutions: sand bags, stakes, clipping frames together or proprietary base that frames snap into.
- Storage: convenience of bins that collapse to use less space when not in use. Other option - bins that nest in storage.
- Big question= temporary/event bins for high-profile events (look nice but also functional)
  - Lin going to check in on “wraps” for bins that may look nicer
- Funnel requests through Facilities services- already part of system

# Notes: Room 4 - Outreach & Engagement

- Victor – large special events 100+ attendees – streamline for event planners to go through and make recommendation on what type of bins they would need.
- Question: Big events 15,000+ difficult because it requires a lot of manpower
- Recommendation: Preventing non-composting items coming to the event = planning in advance. Takes a lot of coordination.
- Lisa: hire temporary event staff, contract to set them up to have enough time to get enough training
- Leslie – Is there a benefit to staff bin monitors?
- We do not want to think about waste and they do not read signage – having someone there to guide them, doesn't really show that having bin monitors will be work
- Portia – No one reads anything but if you change the approach and let them know where to place them, it helps them be more aware

# Notes: Room 4 - Outreach & Engagement

- Llynwen – getting students more involved for events and items that are waste free 100% compostable
- Kaylee – have a lid so people have extra time to observe which items should go where - have visual queues. Composting is harder to manage.
- Different compost regulations depending on Counties
- Stephanie – For school districts, what is recommended to monitor bins since they do not have it in the budget to outsource
- Recommendation: schedule shifts for students or PTA to help out or non-profit organizations.
- Alec – Coordinating volunteers, make an arrangement with a service group - Individual volunteers who represent their group
- Angela – Students are required to do volunteer hours, can reach out to them.
-

# Notes: Room 4 - Outreach & Engagement

- Stephanie – the focus should be more on education and inspiring people to be positive and letting them know composting is good – helps the environment.
- Lisa – For large events – special event permit is required - One of the condition is having the weight tags. They do not get back their full deposit if they do not provide them with a weight tag.
-

# Notes: Main Room - General discussion

---

- Experiencing changes in which materials are accepted/recycled/composted in terms of serviceware?
  - Julie: Yes - keep open communication with haulers, use this as opportunity to move toward using more reusables (start with one event, start small, and expand from there)
  - Alan: No major shifts in materials accepted yet, but could be coming - reroute food waste to be turned into animal feed, so no food waste hauling anyway
    - Bring portable utensil washing station on site for reusables - avoid disposables entirely?
  - Nicole - reusables: on-site caterer defaults to reusables, so when events use them infrastructure for reusables is already there
    - Note that reusables not always best/lowest-waste option if high rate of reusable breakage!
    - Vet caterers through catering showcase that is required to be Zero waste - gave opportunity to educate caterers & vendors, gave them a reason to have zero-waste options, and included survey about their zero-waste strategies (is a resource now available on website - University of Michigan)
- Catering
  - Yelp for caterers? - rate caterers and zero-waste options (serviceware, etc)

# Notes: Main Room - General discussion

---

- Events in general
  - Julie (City of Edmonton - Canada) - permit external organizers to hold events
    - Large events need to deal with their own waste (only have infrastructure to support small events)
    - July 1st - legislation coming about reducing single use utensils (given away without asking) - only give a fork if they ask for a fork, etc
- What do we consider 'Basic/Minimum' for sustainable events?
  - Alan - can't go to zero waste immediately (would love to, but not always realistic)
    - Usually existing garbage cans - first step is to pair up those existing cans with recycling containers and make sure every waste/garbage bin has a recycling option beside it
      - Then after a year, added organics bin (third stream) to each station
    - Start introducing messaging before, after, and during events (put waste into correct bins, look for signage), start to introduce banners, signage, promotion that includes info about what Zero Waste means
  - Julie (ZWCC) - STARTS WITH CONVERSATIONS - basics is really just start talking about it - talk with organizers, have that conversation, plan for what you can do, and keep the conversation going





# Notes: Main Room - General discussion

---

- Event planners vs venue operators - there is a difference and they need different info!
  - Need different information
  - Venue operators need contract language, what expectations are reasonable, best practices with vendors FIRST and then share that info with event planners in order to start to standardize what event planners encounter at every venue
    - Link to google form from University of Michigan to help coordinate between event planners and venue operators:
- Waste Bin Monitors
  - University of Michigan:
    - Everyone who volunteers to be a Monitor needs to do Zero Waste training
    - Events with newcomers & larger events require Waste Bin Monitors - have one volunteer per waste bin STATION instead of each and every bin
      - TIP: use centralized stations so Monitors can direct people as they approach the waste stations
      - Use of large Flags to mark waste stations so people can see them from far off and head toward them intentionally
  - Oliver's Markets:
    - Less is more - fewer bins operate better than more bins

# Notes: Main Room - General discussion

---

- Kris @ San Miguel County, Colorado:
  - Large music events - food diversion
- Special portable bins that are rented/shared as needed or events (stored in between events)?
  - Wire with coloured bags - easy to store and transport, clear stream designation
  - Tall and narrow - easy to store and stack, low storage footprint
-

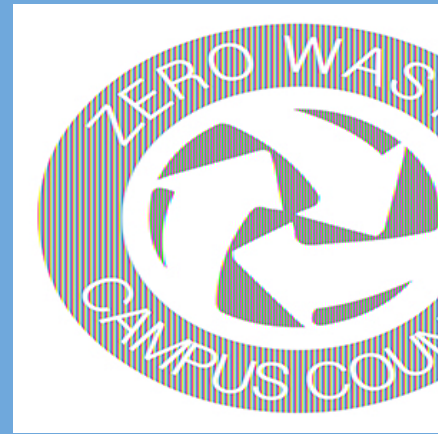
*Closing slides - full group*



# Get Involved w/ ZWCC

## Monthly “Meet Up, Waste Down”

- Networking event with hot topics and breakout rooms to discuss your real experiences in the field.
- Occurs the last Tuesday of the month.



Sign up for Slack channel:

[https://join.slack.com/t/zwcampuscouncil/shared\\_invite/zt-1o4e39kwh-zlRw63HJ05lVLbBbQePskQ](https://join.slack.com/t/zwcampuscouncil/shared_invite/zt-1o4e39kwh-zlRw63HJ05lVLbBbQePskQ)

Contact: [zerowastecampuscouncil@crra.com](mailto:zerowastecampuscouncil@crra.com);  
<https://www.crra.com/zwcc-technical-council>

Attend [California Resource Recovery Association \(CRRA\)](#) annual conference August 13-16, 2023, Burlingame, CA (just south of San Francisco) for zero waste campus sessions and tours.

# Busch System Webinar Series



## Recent programs:

- *Reuse to Replace Single Use*
- *Diversion from Venues*
- *K-12 programs*
- *Waste Reduction in Healthcare*

## Stay tuned:

- *Program TBD - Late February*

[Learn more: buschsystems.com > Webinars](https://buschsystems.com)

# Share Resources

UT-Austin bin signage template	<a href="https://utexas.app.box.com/s/9qzv1j7xfv5e9e48l4sga7iwgseojoy">https://utexas.app.box.com/s/9qzv1j7xfv5e9e48l4sga7iwgseojoy</a>
UT-Austin vendor conversation guide	<a href="https://utexas.app.box.com/s/dch3nffiw86m15uhfx446yqs2x35tw">https://utexas.app.box.com/s/dch3nffiw86m15uhfx446yqs2x35tw</a>
**Find additional UT-Austin resources on slide 26	
Reusable packaging hygiene guidelines for events	<a href="https://sustainable-event-alliance.org/global-reusables-at-events-hygiene-standard/">https://sustainable-event-alliance.org/global-reusables-at-events-hygiene-standard/</a>
Stanford University Zero Waste Events	<a href="https://sustainable.stanford.edu/cardinal-green/cardinal-green-events/cardinal-green-events">https://sustainable.stanford.edu/cardinal-green/cardinal-green-events/cardinal-green-events</a>
CET Guidance for Contracting Trash, Recycling & Food Waste Services	<a href="https://www.centerforecototechnology.org/wp-content/uploads/2022/06/CT_WFS_Hauler_BMP4.pdf">https://www.centerforecototechnology.org/wp-content/uploads/2022/06/CT_WFS_Hauler_BMP4.pdf</a>
TRUE Rating System	<a href="https://true.gbci.org/sites/default/files/resources/TRUE-Rating-System-2022.pdf">https://true.gbci.org/sites/default/files/resources/TRUE-Rating-System-2022.pdf</a>
SF Environment Zero Waste Events Checklist	<a href="https://sfenvironment.org/sites/default/files/fliers/sfe_zw_events_checklist_september2022.pdf">https://sfenvironment.org/sites/default/files/fliers/sfe_zw_events_checklist_september2022.pdf</a>

# Share Resources

Sacramento State- Zero Waste Event Guidelines	<a href="https://www.csus.edu/experience/innovation-creativity/sustainability/_internal/zero-waste-event-guidelines1.pdf">https://www.csus.edu/experience/innovation-creativity/sustainability/_internal/zero-waste-event-guidelines1.pdf</a>
Guide to TRUE- Events	<a href="https://true.gbci.org/sites/default/files/resources/TRUE%20Technical%20Guidance%20for%20Events.pdf">https://true.gbci.org/sites/default/files/resources/TRUE%20Technical%20Guidance%20for%20Events.pdf</a>
Seventh Gen. ZW Event planning guide	<a href="https://swancc.org/resources/educational-resources/toolkits/392-zero-waste-event-guide/file">https://swancc.org/resources/educational-resources/toolkits/392-zero-waste-event-guide/file</a>
Swarthmore College Green Events Guide	<a href="https://drive.google.com/file/d/18HYBIRI3xB4I1yB2RzAqBK_NvDDC0H1Es/view">https://drive.google.com/file/d/18HYBIRI3xB4I1yB2RzAqBK_NvDDC0H1Es/view</a>

# Give Us Feedback

Look for email with survey following webinar:

How can we make discussion / info exchange  
more productive?

---





# Share Photos



UT - Austin



Stanford University  
(Changing lid colors to  
blue/green/gray soon)



Northwestern U, zero  
was station with bus  
tub to collect reusable  
utensils

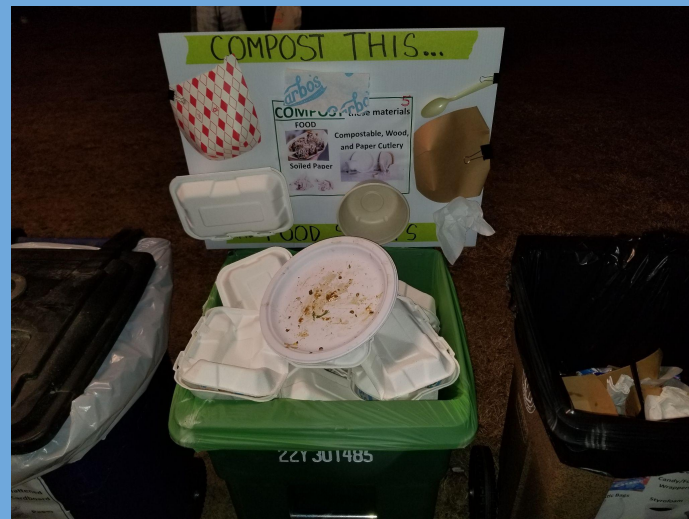
# Share Photos



University of Michigan:  
Convocation Picnic (we  
reuse boxes as long as  
possible)



University of Michigan:  
compostable items @  
event attached to  
reusable a-frame near  
collection bin



City of Austin- Austin  
Resource Recovery  
Compost pilot at Austin  
New Year event

# Share Photos



University of Kentucky

50 gal., signs produced by facilities shop from yard sign material. Used for 600 events / annually. For details, contact Esther Moberly at [emoberly@uky.edu](mailto:emoberly@uky.edu)



University of Kentucky

Bins used for nicer events. Metal framed, 50 gallon capacity. Not easy to transport between locations

Type Organization's name

# Share Photos



Type Organization's  
name

Type Organization's  
name

Type Organization's  
name