



BUSCH[®]
SYSTEMS



Platinum Series

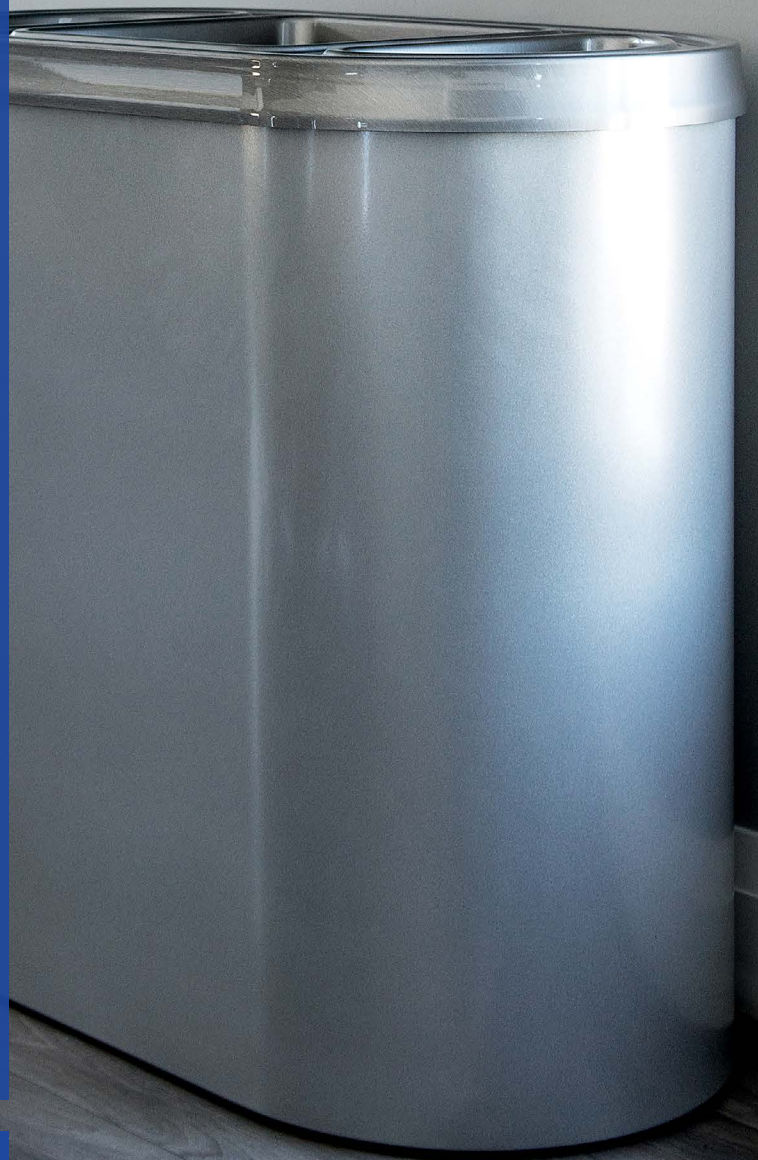
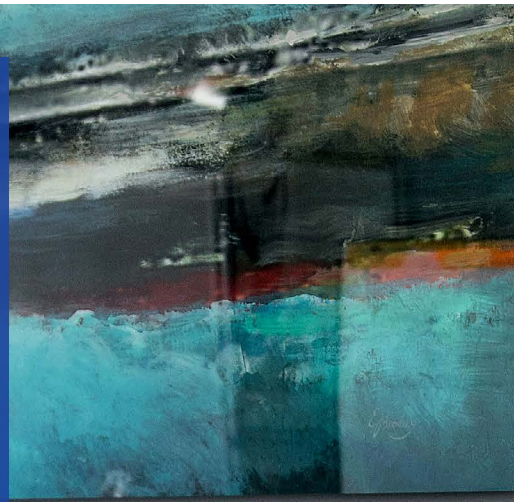
Diversion That's Better Than Gold

Product Data Sheet | Version 1.0

Busch Systems International Inc.
81 Rawson Avenue, Barrie ON., Canada
1.800.565.9931
buschsystems.com



View the Platinum Series Online!





Diversion That's Better Than Gold

This sharp-looking container provides an all-in-one solution for any waste and recycling collection in public spaces. With two- or three-streams located in one centralized container, the Platinum helps achieve outstanding diversion rates while maintaining an upscale aesthetic.



156093



BUILD YOUR PLATINUM STATION



ONE: THE BODY

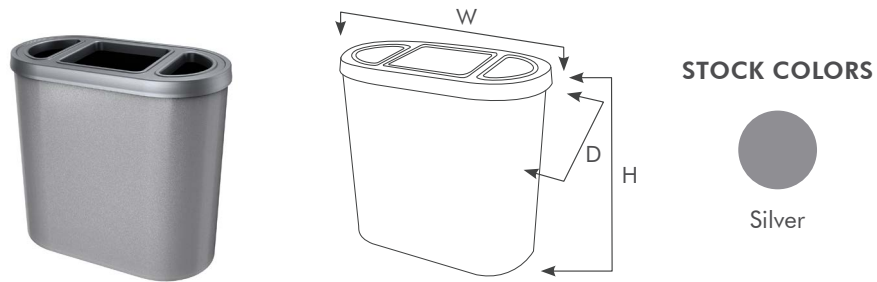
- Triple

TWO: THE LABELS

- Choose from our stock options or customize your own!

BODY SPECIFICATIONS

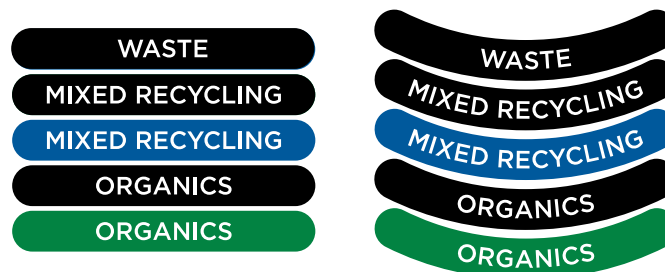
Below are the available Body Options for the Platinum Series. The measurement guide is the essence of various standard measuring methods. All measurements are in inches. The Platinum is stocked in a double or triple stream options. Talk to your dedicated Busch Systems® sales representative for more information on how to choose the right container for your space.



Body Shape	Height	Width	Depth	Weight	Capacity
Triple	30.5"H (774.7mm)	16.58"W (421.13mm)	32.13"D (816.102mm)	62.35lbs (28.28kg)	45 gallons

STOCK LABELS

These premium labels are lightly textured for durability and easy to apply. They come standard in black, blue and green. All labels can be customized to match your unique branding and stream requirements at your request.



MATERIAL & CONSTRUCTION DETAILS

Not all recycling & waste receptacles are created equal. Our company policy is never to compromise on our workmanship or the quality material standards we've set. We only recommend and use quality first grade materials on our recycling & waste containers, and source these from OEM's at highly-competitive prices. Being a manufacturer that buys at high-quantities gives significant buying power with companies which in turn saves you money.

The design process, materials used, finishes and manufacturing standards all affect the final product. Every decision is vital to getting the most value for your investment. You deserve recycling & waste containers that meets your demands for quality and durability and will enhance your working environment for years to come.

Component	Material(s)	Construction
Body	Powder Coated Steel	<ul style="list-style-type: none"> Steel Construction
Lid	ABS	<ul style="list-style-type: none"> Brushed Pewter ABS finish
Liners - Ellipse	LDPE	<ul style="list-style-type: none"> Liners are molded from durable black LDPE
Liners - Cube	HDPE	<ul style="list-style-type: none"> Liners are made from durable black HDPE and contain up to 35% recycled content
Labels	Polyurethane	<ul style="list-style-type: none"> Permanent pressure-sensitive adhesive for low surface energy

ENVIRONMENTAL CONSIDERATIONS

- All Platinum Series Receptacles use a low energy, resource efficient manufacturing and curing process
- All Platinum Series receptacle components disassemble at end of life and are fully recyclable
- Low maintenance and extremely long service life
- Powdercoat finishes are no- or low-VOC, depending on color
- Manufactured in North America

Configurations	Post-Industrial Recycled Content	Post-Consumer Recycled Content	Total Recycled Content	3rd Party Certifications
Platinum	Contact us	Contact us	Contact us	-

Busch Systems® is dedicated to environmental responsibility. We maintain an Environmental Management System and are continually working to improve our impact through efficiency, material selection, vendor education, employee involvement, and an unwavering commitment to being a B-Corporation®. If you would like additional information on our product development process or if you don't see the information you need for your project on this page, please contact our Sustainability Team at sustainability@buschsystems.com.

LEAD TIME

Our standard lead times on the Platinum Series is 1 week or less for stock and 4-6 weeks for large and/or custom orders. Please contact us to discuss your specific timing requirements.

PRICING

Please contact us at **800.565.9931** or sales@buschsystems.com. At Busch Systems®, we design, manufacture and sell our products directly to you. Our sales team is available to assist you with questions about our products, requests for quotes, and orders. Vertical Managers are located across North America to assist with the front-end specification and quoting process, and our in-house Project Sales Coordinators follow your project through from the time you place an order to shipment.

TO ORDER PLEASE SPECIFY

Quantity, body model, lid model, label choice and any optional product accessories. Talk to your dedicated Busch Systems® sales representative for more information. If you do not have a dedicated Sales Representative please contact us via our website at buschsystems.com/contact-us/

INSTALLATION

Busch Systems® Platinum Series containers are hassle-free when it comes to installation. Each container comes fully assembled and individually boxed using high-density cardboard with high-recycled content to ensure safe and environmentally friendly transport.

To install your Platinum Series container:

1. Unbox your container
2. Insert bags into your liners and wrap them around the edges of the liners
3. Apply your chosen labels

CARE & MAINTENANCE

Busch Systems® powder coated steel products are finished with a polyester powder coat paint that is intended to help keep your recycling and waste containers protected and attractive looking for as long as possible in their environment. Their appearance and lifespan will be greatly affected by their care. Powder coated finishes can be treated like most other paints and benefit from regular cleaning.

The frequency of cleaning required depends on the environment in which the containers are used. Outdoor containers will be subject to different environmental conditions than indoor units, i.e. sun, rain, wind, pollution, winter temperatures, and salt/sea air.

To avoid the accumulation of dirt and grime on your Busch Systems® products, and help prevent corrosion, we recommend that a mild detergent be used (not an abrasive), such as a pH-neutral liquid (hand dishwashing or hand car washing soaps, for example) diluted in warm water. Rinse well with clean water. Any dirt adhering to the powder coating should be removed. In order to remove deposits such as salt or dust, use a soft brush (non-abrasive). If this is not sufficient to remove stubborn soiling, the following products have been tested for use:

- Ajax Cream
- Liquid Gumption
- Flash (in water)
- Ajax Liquid (in water)
- Cutting compound ('T. Cut')

If solvents are absolutely needed to remove marks, a soft cloth dampened with white spirit may be used.

THINGS TO AVOID

- Solvents such as acetone, contact cleaners, thinners or Methyl Ethyl Ketone (MEK). These solvents are very damaging to the powder coat and will soften and/or dissolve the surface of the coating, diminishing its shine and durability or removing the finish altogether.
- Cleaning water that contains sulfur, iron oxide, chlorine, fluoride
- Waxes that contain abrasives
- Abrasive cleaning tools or brushes
- Contact with electrical current and dissimilar metals

Contact Us Today for a Quote on Your Platinum Station!

